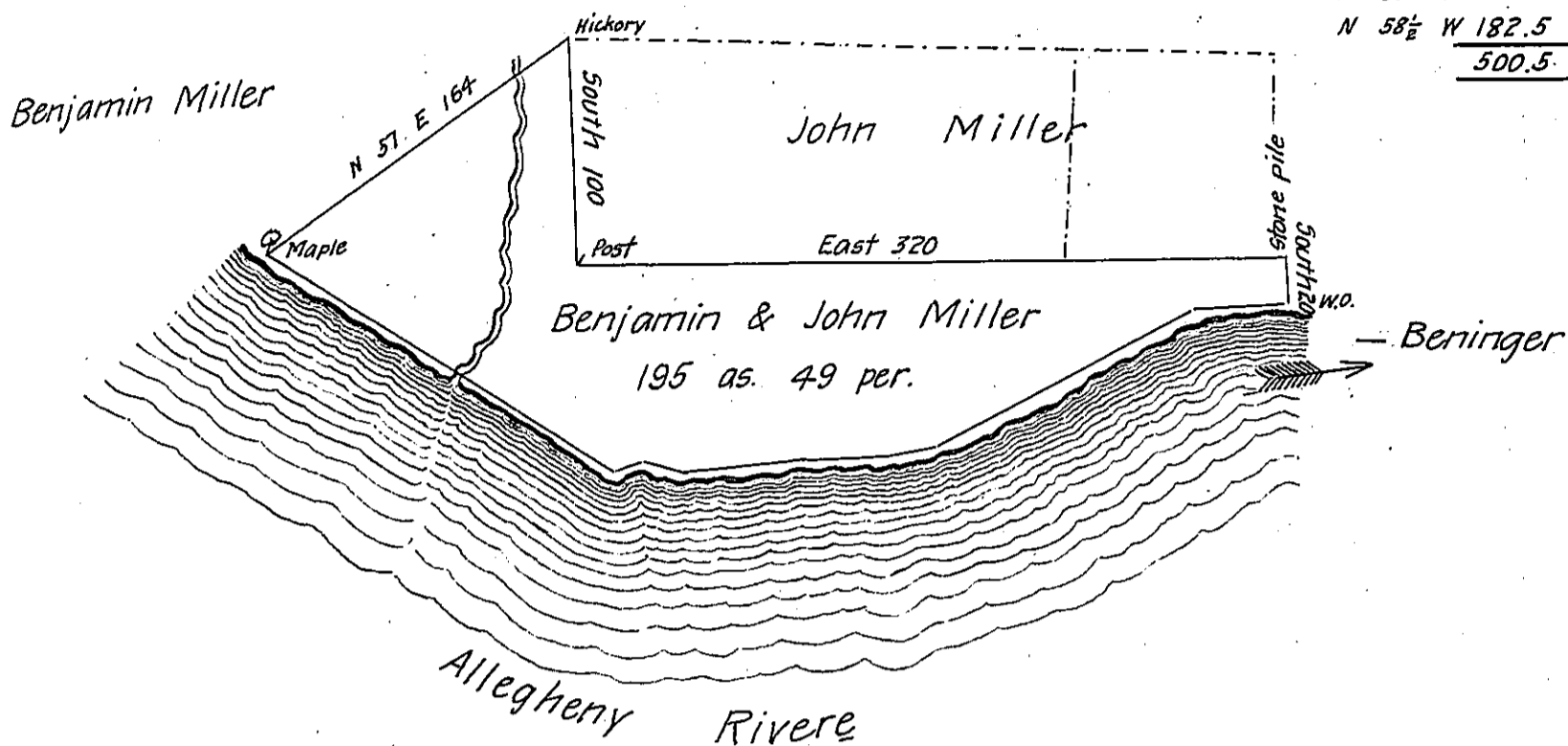


Courses Up the River **212**  
 S 87° W 40  
 S 64° W 134  
 S 80 W 21  
 West 38  
 N 84 W 56  
 S 72 W 20  
 S 85° W 9  
 N 58½ W 182.5  
500.5



In pursuance of a Warrant dated July 22<sup>nd</sup> 1836 Granted to Benjamin and John Miller.

Surveyed on the 15<sup>th</sup> day of September 1836 the above described Tract of Land containing One hundred Ninety five Acres and forty nine Perches with the allowance of Six pr. Ct. Situate in Toby and Perry Townships

Jonathan E Meredith D.S.

To John Taylor Esq<sup>r</sup>  
 Surveyor General

IN TESTIMONY that the above is a copy of the original remaining on file in the Department of Internal Affairs of Pennsylvania, made conformably to an Act of Assembly approved the 16th day of February, 1833, I have hereunto set my Hand and caused the Seal of said Department to be affixed at Harrisburg, this eighth day of March 1906

*Joseph D. Brown*  
 Secretary of Internal Affairs.